

95021 Gauge Hatch

The Shand & Jurs 95021 Gauge Hatch is designed to provide easy access to storage tanks for gauging product level or temperature and product sampling.

It is available in a range of sizes from 4" through 12", and can be ordered with one of the two optional clamp covers. The hatch without the clamp option can be used as a supplemental pressure relief vent. Standard set pressure, without loading weights, varies depending upon size and material. Maximum working pressure for the clamped cover versions is 3.0 psi.

The standard hatch features a foot opening cover, flexible sealing member and tape gauge marker.

Clamp down covers are available in either the traditional screw-down or the revolutionary "Quik-Clamp" Cam Lock. The "Quik-Clamp" allows the operator to open the hatch with his feet, eliminating the need to remove work gloves or set down hand tools. This feature is also very useful in cold environments or when dealing with hazardous products.

Materials of construction include aluminum, steel, 316 stainless steel and bronze.

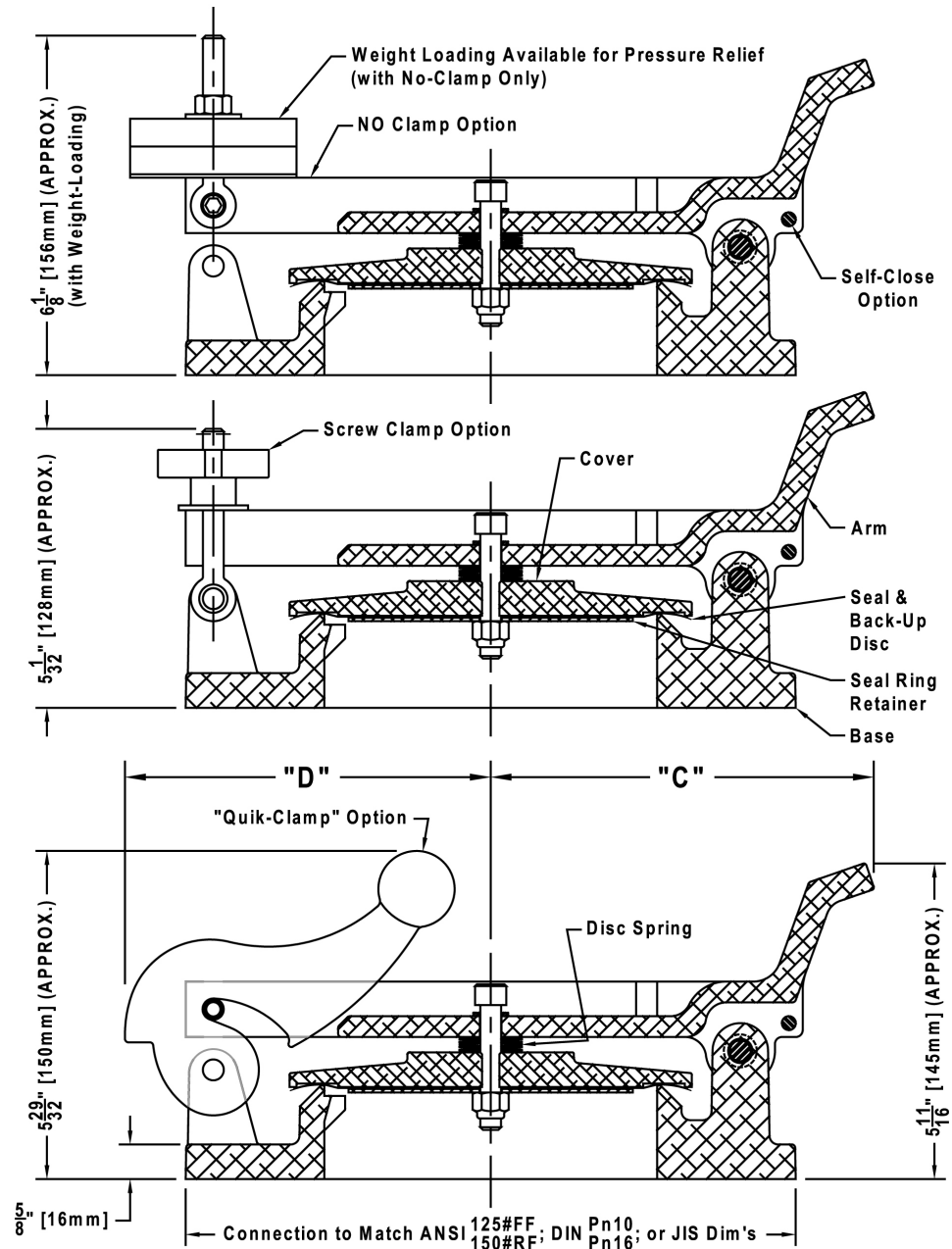
For spark resistant design, specify ATEX option.



Features

- Easy access for product gauging or sampling
- "Quik-Clamp" option allows for hands-free operation
- Available in sizes from 4" to 12"
- Materials of construction include aluminum, steel & 316 S.S., bronze
- Teflon diaphragm ensures safe tight seal
- Maximum working pressure 3 PSIG (clamped only)

Dimensions



Size	Inlet Diameter	Flange "D"	"C"	"D"
4"	4" (102 mm)	9" (229 mm)	5 $\frac{29}{32}$ " (150 mm)	5 $\frac{19}{32}$ " (142 mm)
6"	6" (152 mm)	11" (279 mm)	6 $\frac{29}{32}$ " (175 mm)	6 $\frac{19}{32}$ " (168 mm)
8"	8" (203 mm)	13 $\frac{1}{2}$ " (343 mm)	7 $\frac{29}{32}$ " (201 mm)	7 $\frac{27}{32}$ " (199 mm)
10"	10" (254 mm)	16" (406 mm)	8 $\frac{29}{32}$ " (226 mm)	9 $\frac{3}{32}$ " (231 mm)
12"	11 $\frac{3}{4}$ " (299 mm)	19 $\frac{5}{16}$ " (491 mm)	11 $\frac{1}{4}$ " (286 mm)	10 $\frac{1}{4}$ " (260 mm)

All designs subject to change. Certified dimensions and specifications available upon request.

95021 Ordering Guide

Model Number Selection

The model number will consist of a base number **95021** followed by 6 digit numbers. These digits will represent 6 option tables.

95021 - AB - CD - EF

Ordering Information

Specify:

1. Model 95021 Gauge Hatch
2. Size
3. Connection Type*
4. Clamping Cover Style
5. Material
6. Locking Option
7. Specify CE for Ordinary EU Locations use Table E2 and E3
8. ATEX Certification for Group IIB, IIA EU Locations, use Table E4 and E5

*Note: Threaded adaptors are available for all sizes. Please consult the factory for pricing and availability.

Table A - Connection

Option A	Description
0	FF Bolted 150 lb. ANSI
1	FF Undrilled 150 lb. ANSI
2	* RF Bolted 150 lb. ANSI
3	FF Bolted DIN PN 16
4	* RF Bolted DIN PN 16
5	FF Bolted JIS 10K
6	* RF Bolted JIS 10K
7	Steel, NPT
8	Aluminum, NPT
9	Stainless Steel, NPT

*RF not available in Aluminum and Bronze

Table B - Size

Option B	Size
1	4"
2	6"
3	8"
4	10"
5	12"

Table C - Softgoods

Option C	Description
0	FEP Teflon with N8090 Back-Up Disc
1	FEP Teflon with Glass Filled Teflon Back-Up Disc
2	VITON (Back-Up Disc Not Required)
3	Buna-N (Back-Up Disc Not Required)
4	EPDM (Back-Up Disc Not Required)
5	TCF with Glass Filled Teflon Back-Up (For HI TEMP 500°F MAX)

N8090 - Nitrile Fiber Composite, TCF - Teflon Coated Fiberglass

Table D - Clamping Type

Option D	Description
0	Unclamped
1	Screw Down
2	Quick Clamp
3	Unclamped Side Mount

Table E - Locking Provisions

Option E	Description
0	Standard No Lock
1	Locking On Quick Clamp / Screwdown
2	CE and no Lock
3	CE and Lock Quick Clamp / Screwdown
4	ATEX Certified - No Lock
5	ATEX Certified - Lock Quick Clamp / Screwdown

Table F - Body Material

Option F	Body Material
0	Steel
1	Aluminum
2	Stainless Steel
3	Bronze